

Bacteria investigation with Ecoli, Salmonella and Vibrio

1. Original water investigation
2. One time per month to examine the drinking water



aqua pura



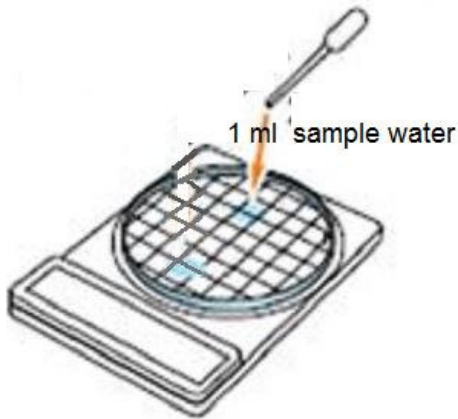
Suisse/Switzerland/Schweiz

www.aqua-pura.org

www.saubereswasser.wordpress.com

Escherichia coli

1. Inoculation on EC

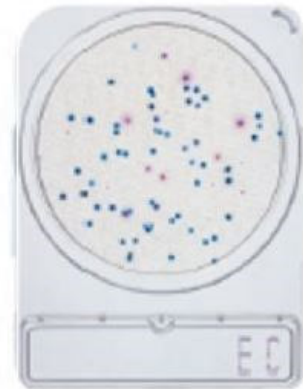


2. Incubation

35- 37°C, 20 - 24 hours

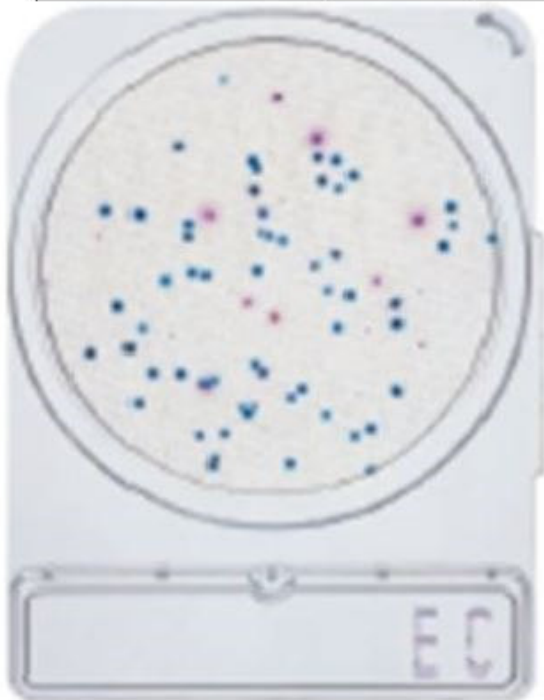


3. Interpretation



E.coli

35°- 37 Celsius 24 hours incubation



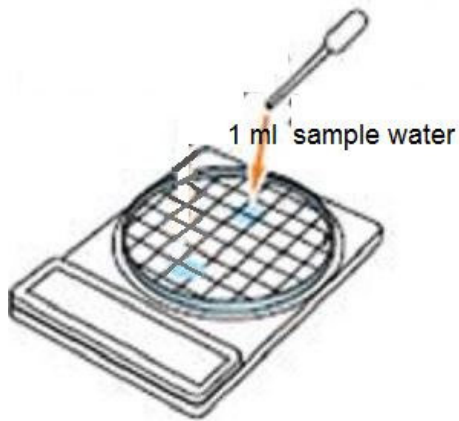
Positive reaction
No Drinking Water



Negativ reaction
Drinking Water

Vibrio (Cholera)

1. Inoculation on VP

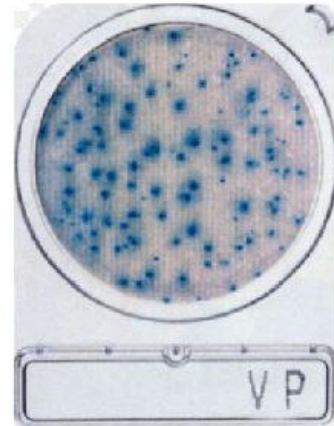


2. Incubation

35- 37°C, 20 - 24 hours



3. Interpretation



Vibrio (Cholera) 35°- 37 Celsius 24 hours incubation



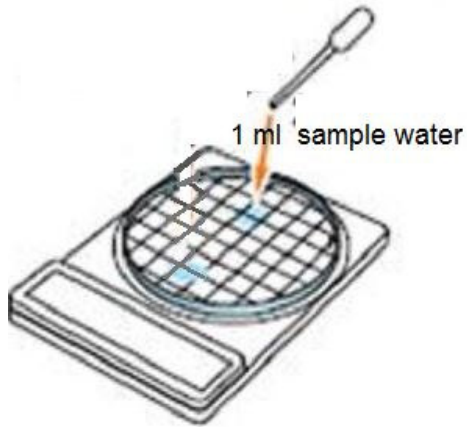
Positive reaction
No Drinking Water



Negativ reaction
Drinking Water

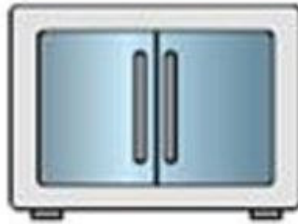
Salmonella

1. Inoculation on SL



2. Incubation

41- 43°C, 20 - 24 houis



3. Interpretation



Salmonella

42°Celsius 24 houis incubation



Motility, Yellow sheet, Greening colony, Black colonies are generated by hydrogen sulfide.



No color change
Red - Red purple