

# Bacteria investigation with Ecoli, Salmonella and Vibrio

1. Original water investigation
2. One time per month to examine the drinking water



**aqua pura**



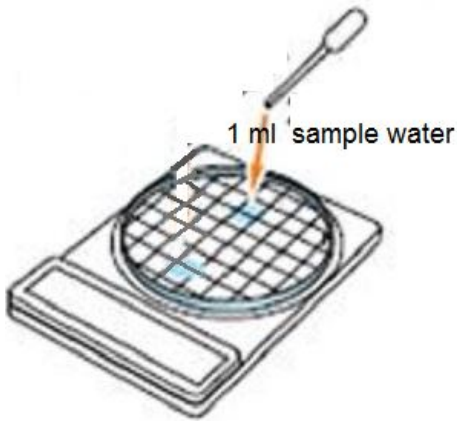
**Suisse/Switzerland/Schweiz**

**[www.aqua-pura.ch](http://www.aqua-pura.ch)**

**[www.saubereswasser.wordpress.com](http://www.saubereswasser.wordpress.com)**

# Escherichia coli

1. Inoculation on EC

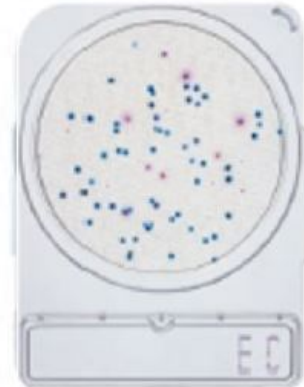


2. Incubation

35- 37°C, 20 - 24 hours

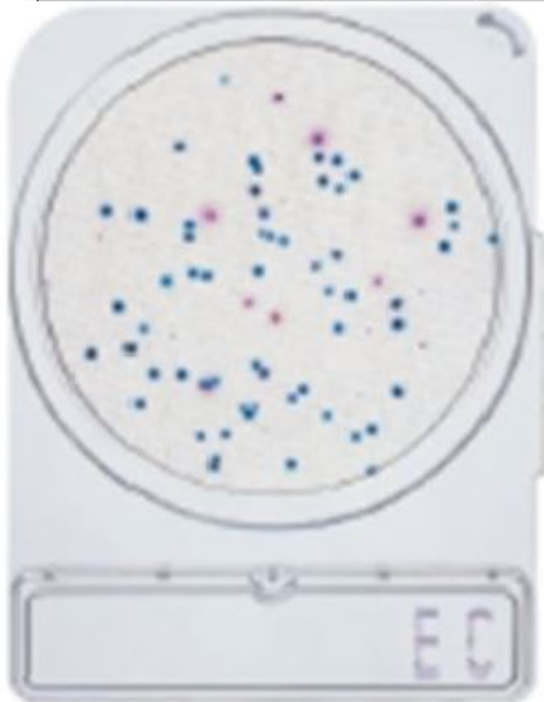


3. Interpretation



E.coli

35°- 37 Celsius 24 hours incubation



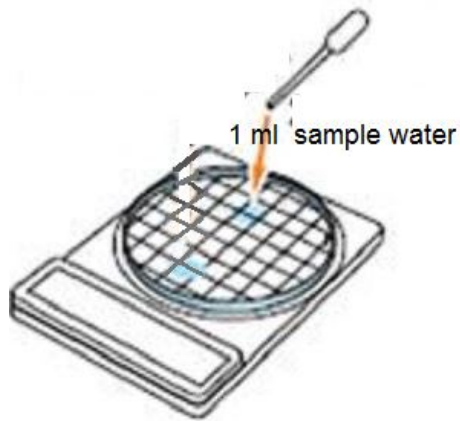
Positive reaction  
No Drinking Water



Negativ reaction  
Drinking Water

# Vibrio (Cholera)

1. Inoculation on VP

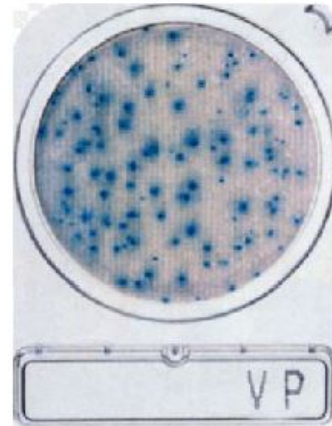


2. Incubation

35- 37°C, 20 - 24 hours



3. Interpretation



Vibrio (Cholera) 35°- 37 Celsius 24 houers incubation



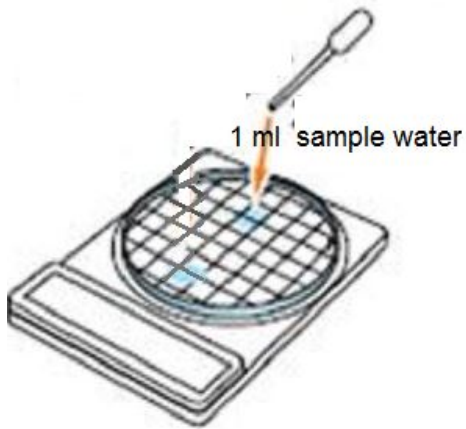
Positive reaction  
No Drinking Water



Negativ reaction  
Drinking Water

# Salmonella

1. Inoculation on SL



2. Incubation

41- 43°C, 20 - 24 houers



3. Interpretation



Salmonella

42°Celsius 24 houers incubation



**Motility, Yellow sheet, Greening colony, Black colonies are generated by hydrogen sulfide.**



**No color change  
Red – Red purple**